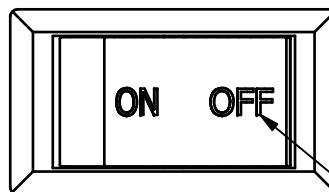
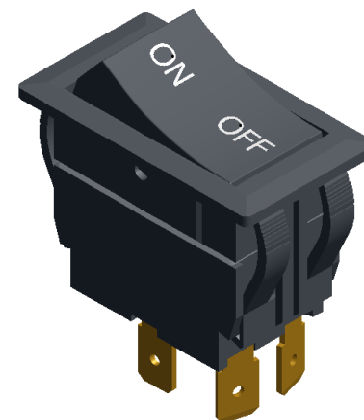


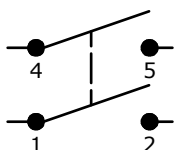
SUGGESTED PANEL CUTOUT  
MAX PANEL THICKNESS 6.0mm



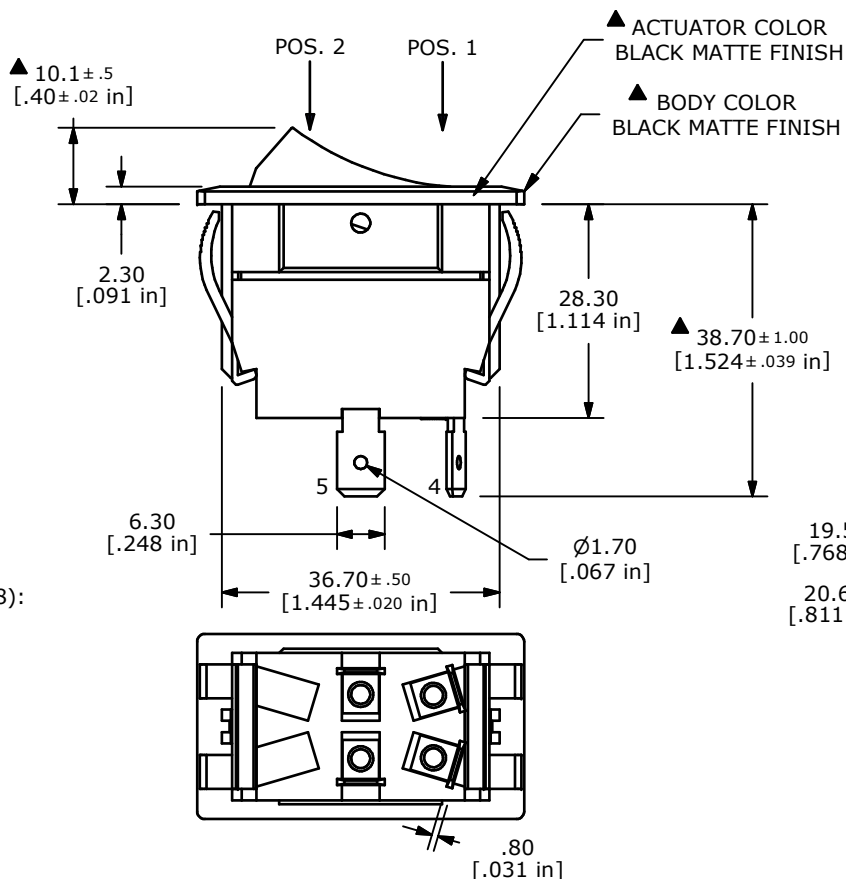
▲ MARKING COLOR  
WHITE



SWITCH FUNCTION	
POS. 2	POS. 1
ON	OFF
1-2, 4-5	OPEN



▲ CIRCUIT: DPST



17.10 [.673 in]

- NOTES:
- ALL DIMENSIONS IN MM [INCH]
  - GENERAL TOLERANCE: X.X=±0.4  
X.XX=±0.25
  - RATINGS: ANSI/UL 508 AND CAN/CSA C22.2 NO.14 (E195908):  
20A, 125VAC [cURus]  
15A, 277VAC [cURus]  
2HP, 110/250VAC [cURus]
  - CONTACT RESISTANCE: 50 mΩ MAX. @ 50VAC
  - INSULATION RESISTANCE: 800 MΩ MIN. @ 500VDC
  - ELECTRICAL LIFE: 6,000 CYCLES [cURus]
  - DIELECTRIC STRENGTH: 1,500V FOR 1 MINUTE
  - OPERATING TEMPERATURE: 0°C TO 55°C [cURus]
  - INGRESS PROTECTION: IP54
  - ▲ DENOTES CRITICAL PARAMETER
  - 2011/65/EU (RoHS) COMPLIANT.



A	22472	NEW RELEASE	8/30/16	MJR
REV	PCR NO	DESCRIPTION	DATE	BY

TITLE RVW42D1124				
SCALE 1:1	DATE 8/30/2016	DR MJR	DWG 34-RVW42D1124	REV A

THE INFORMATION CONTAINED IN THIS DOCUMENT IS PROPRIETARY TO E-SWITCH AND IS NOT TO BE COPIED OR TRANSFERRED